

200V-600V 2A SUPER-FAST RECOVERY RECTIFIERS



Features

- Glass-Passivated Junction Technology
- Wide Voltage Selection
- Forward Current Rating (IF)
- Thermal Resistance (Junction-to-Lead)
- Thermal Resistance (Junction-to-Ambient)
- Reverse Leakage Current (IR)
- Super-Fast Reverse Recovery Time (trr)
- Low-Profile Package



Benefits

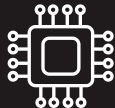
Minimize energy losses and enhance efficiency in high-frequency applications with low forward voltage and a reverse leakage current of just 5 μ A.

A junction-to-lead thermal resistance of 20 $^{\circ}$ C/W and junction-to-ambient thermal resistance of 80 $^{\circ}$ C/W ensure stable operation in challenging conditions without compromising performance.

Applications



Power Supplies



Circuit Protection



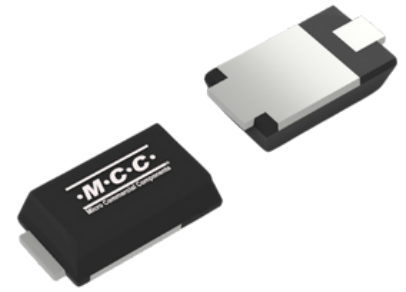
General Purpose

**Speed & Efficiency:
MCC's 200V-600V 2A
Super-Fast Recovery
Rectifiers**



**Superior Thermal
Performance in a
Compact SOD-123HL
Package**

Efficient with Low Forward Voltage & 5 μ A Reverse Leakage



Product Attributes, Parametrics & Datasheets

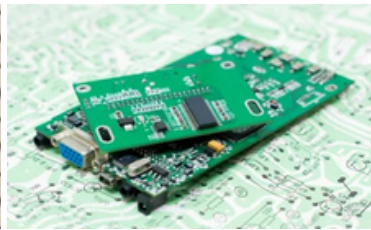
Product	Type	Package	Reverse Working-Voltage VRWM	Rectified Forward Current IF	Reverse Current IR	Reverse Recovery Time trr	Mounting Type	Datasheet
<u>UG2DHL</u>	Super-Fast Recovery Rectifier	SOD-123HL	200V	2A	5 μ A	25nS	Surface-Mount (SMD)	<u>Info</u>
<u>UG2GHL</u>	Super-Fast Recovery Rectifier	SOD-123HL	400V	2A	5 μ A	25nS	Surface-Mount (SMD)	<u>Info</u>
<u>UG2JHL</u>	Super-Fast Recovery Rectifier	SOD-123HL	600V	2A	5 μ A	35nS	Surface-Mount (SMD)	<u>Info</u>

Applications:



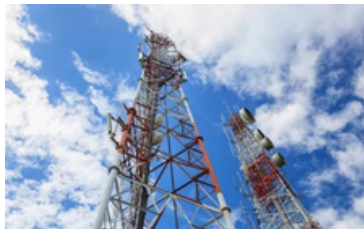
Power Supplies

- Switching power supplies
- DC/DC converters
- Inverters
- Switching mode converters



Circuit Protection

- Snubber circuits
- Freewheeling circuits



Communications and Signal Processing

- High-frequency RF signal detection
- Modulation in communication circuits



General Purpose

- General purpose rectification (high-frequency rectifiers)
- High-frequency switching
- Lighting applications

CONTACT MCC TO REQUEST A SAMPLE

mccsemi.com | +818.701.4933