

## 6.5 V – 58 V TVS DIODES



### Features

- Ultra-compact SOD-323HE-B package
- Wide voltage range: 6.5V–58V
- 200 W peak pulse power
- Unidirectional for DC rails
- Fast ESD and surge response
- Low leakage current
- Low capacitance

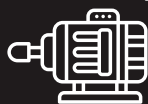


### Benefits

Maximizes PCB Space: Ultra-compact SOD-323HE-B package fits tight enclosures for denser layouts.

Simplifies Design: Wide 6.5 V–58 V range protects multiple rails, reducing components.

### Applications



Motor drives



Laptops



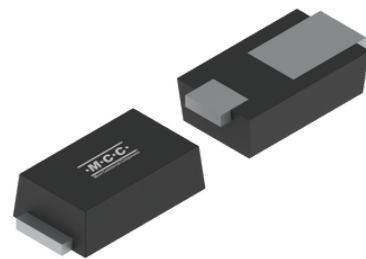
Edge systems

## Ultra-Compact TVS Diodes for Fast, Reliable Surge Protection from 6.5V to 58V



## Unidirectional ESD and Surge Defense in a Slim SOD-323HE-B Package

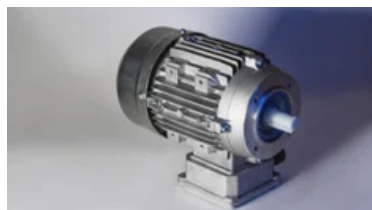
# Ultra-compact, low-profile SOD-323HE-B package for space-constrained designs



## Product Attributes, Parametrics & Datasheets

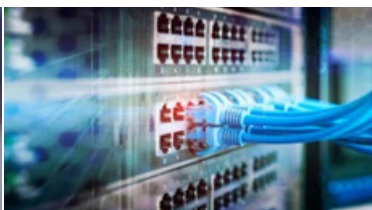
| Product                  | Type | Package     | Peak Pulse Power Dissipation PPPM (W) | Reverse Standoff Voltage VRWM(V) | Peak Pulse Current IPP(A) | Mounting Type | Datasheet            |
|--------------------------|------|-------------|---------------------------------------|----------------------------------|---------------------------|---------------|----------------------|
| <a href="#">SMHEB15A</a> | TVS  | SOD-323HE-B | 200                                   | 15                               | 8.2                       | Surface mount | <a href="#">Info</a> |
| <a href="#">SMHEB30A</a> | TVS  | SOD-323HE-B | 200                                   | 30                               | 4.13                      | Surface mount | <a href="#">Info</a> |

## Applications



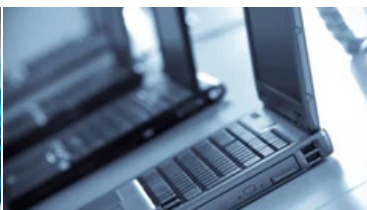
### Industrial

- DC rail protection for PLCs, motor drives, and HMIs
- Surge suppression for -48 V and 24 V interface



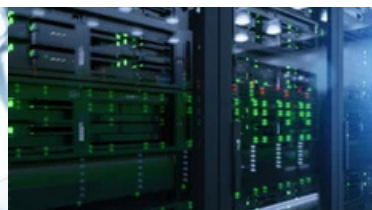
### Telecommunications

- DC rail protection for base stations and small cells
- Surge and ESD protection for backhaul and edge nodes



### Consumer Electronics

- DC rail protection for laptops, tablets, and wearables
- USB power path surge and ESD protection



### Enterprise & Data Center

- DC rail protection for servers, storage, and edge systems
- Hot-swap and backplane rail ESD/surge protection

**CONTACT MCC TO REQUEST A SAMPLE**

mccsemi.com | +818.701.4933

