

## 35A/50A BRIDGE RECTIFIERS 800V/1600V



### Features

- High VRRM of 800V or 1600V and high surge forward current handling
- Average forward current ratings of 35A or 50A
- Glass-passivated chip junctions for improved reliability
- Available in GBJ and PB packages
- PB package includes an integrated heatsink plate for enhanced thermal management
- Compact package size: 28.8mm × 35.5mm × 4.8mm (W × L × H) for both GBJ and PB packages



### Benefits

Glass-passivated chip junctions ensure stable operation and long-term reliability even under high-voltage and high-stress conditions.

Integrated heatsink plate improves heat dissipation and allows for more efficient thermal management in high-power systems.

### Applications



Motor drives



Solar  
inverters



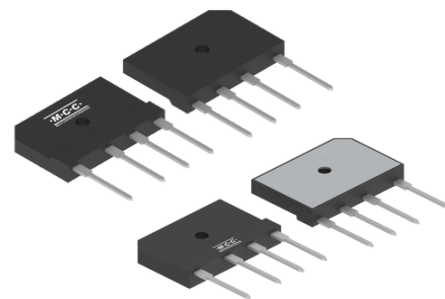
Uninterruptible  
power  
supplies (UPS)

## High Voltage & Surge Current Handling in Interchangeable GBJ/PB Packages



**Offer VRRM of 800V or  
1600V and can handle  
average forward  
current up to 35A or  
50A.**

# Ideal for AC-to-DC Conversion in Power Supplies, Industrial Equipment, Backup Power Systems, & More



## Product Attributes, Parametrics & Datasheets

Product	Type	Package	Working Peak Reverse Voltage VWRM	Average Rectified Forward Current IF	Mounting Type	Datasheet
<a href="#"><u>GBJ3516-BP</u></a>	Bridge Rectifier	GBJ	1600V	35A	Through Hole	<a href="#"><u>Info</u></a>
<a href="#"><u>GBJ5016-BP</u></a>	Bridge Rectifier	GBJ	1600V	50A	Through Hole	<a href="#"><u>Info</u></a>
<a href="#"><u>PB5008L-BP</u></a>	Bridge Rectifier	PB	800V	50A	Through Hole	<a href="#"><u>Info</u></a>
<a href="#"><u>PB5016-BP</u></a>	Bridge Rectifier	PB	1600V	50A	Through Hole	<a href="#"><u>Info</u></a>
<a href="#"><u>PB3516-BP</u></a>	Bridge Rectifier	PB	1600V	35A	Through Hole	<a href="#"><u>Info</u></a>

## Applications:



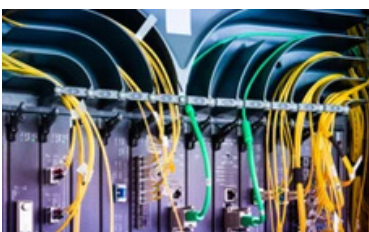
### Industrial Automation

- AC to DC converters
- Switched-mode power supplies (SMPS)
- Motor drives
- Industrial automation equipment



### Power Conversion

- Uninterruptible power supplies (UPS)
- Emergency lighting systems



### Data Center & Server

- Battery chargers
- Power adapters for electronics
- Inverter-based appliances



### Consumer and Commercial Electronics

- Solar inverters
- Wind turbine converters

**CONTACT MCC TO REQUEST A SAMPLE**

mccsemi.com | +818.701.4933

