

600V MOSFET



Features

- **Integrated FRED Body Diode:** Reduces reverse recovery time for improved switching.
- **Kelvin Source Pin:** Dramatically reduces switching losses while enhancing efficiency.
- **Low On-Resistance:** Minimizes power dissipation at 100mΩ (typ.).
- **DFN8080A package** with height of 1mm ideal for compact designs



Benefits

From a low gate charge to low conduction losses, this MOSFET delivers maximum efficiency.

Low junction-to-case thermal resistance of 0.47K/W ensures stable operation in demanding conditions.

Applications



Uninterruptible power supplies



Motor drives



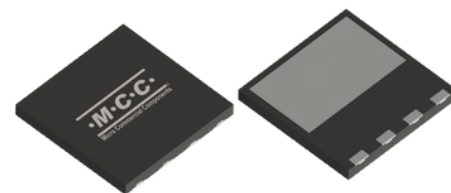
Wind turbine converters

High-Voltage Efficiency: MCC's 600V MOSFET with Kelvin Pin & FRED



Minimize Conduction & Switching Losses in Compact DFN8080A Package

Superjunction Technology Meets Optimal Thermal Performance



Product Attributes, Parametrics & Datasheets

Product	Type	Package	Drain-Source Voltage VDS	Drain- Source On- Resistance RDS(ON)	Mounting Type	Datasheet
MSJL120N60FH	N-Channel Power MOSFET	DFN8080A	600V	100mΩ	Surface- Mount (SMD)	Info

Applications:



Power Supply & Conversion

- AC-DC converters
- DC-DC converters
- Uninterruptible power supplies (UPS)
- Switched-mode power supplies (SMPS)



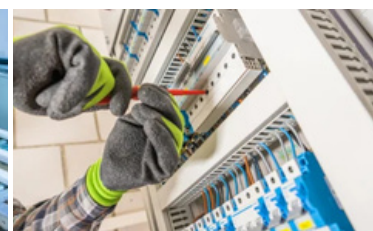
Motor Control

- Motor drives
- Inverter systems



Renewable Energy

- Solar inverter
- Wind turbine converters



Industrial Automation

- Robotics
- Industrial controllers

CONTACT MCC TO REQUEST A SAMPLE

mccsemi.com | +818.701.4933