

100V & 150V Schottky Barrier Rectifiers



Features

- AEC-Q101 qualified
- Low forward voltage drop
- Low-profile package (typical height of 0.9mm)
- Minimal power losses
- Robust package integrity
- Excellent thermal stability
- Operating junction temperature up to 175°C



Benefits

With a low forward drop of only 1A, our SBRs reduce power losses and boost overall system efficiency, making them ideal for power-sensitive applications.

Designed to minimize power losses and ensure cooler operation thanks to excellent thermal management, these components enhance the lifespan of crucial machines and devices.

Applications



Motor Control Circuits



Power Supply Units



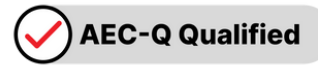
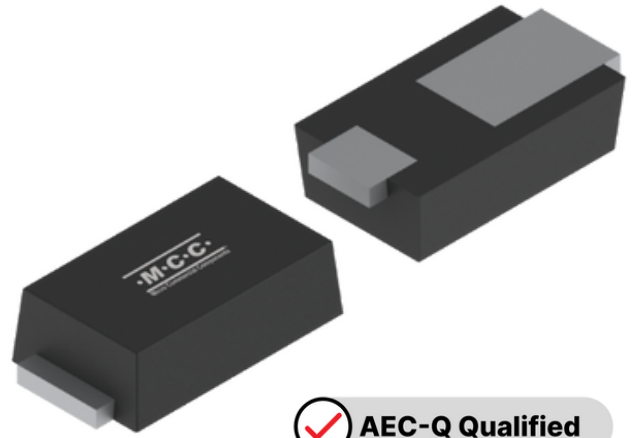
Effective Energy Transformation

Efficiency in a Compact Package: MCC's 100V & 150V Schottky Barrier Rectifiers



Upgrade Automotive and Industrial Power Systems with Reliable Performance

Efficiency in a Compact Package: MCC's 100V & 150V Schottky Barrier Rectifiers



Product Attributes, Parametrics & Datasheets

Product	TYPE	Package	Working Peak Reverse Voltage VRWM	Average Rectified Forward Current IF(AV)	Mounting Type	Datasheet
<u>SMD110PBQ-TP</u>	Schottky Barrier Rectifier	SOD-323HE	100V	1A	Surface-mount (SMD)	<u>Info</u>
<u>SMD115PBQ-TP</u>	Schottky Barrier Rectifier	SOD-323HE	150V	1A	Surface-mount (SMD)	<u>Info</u>

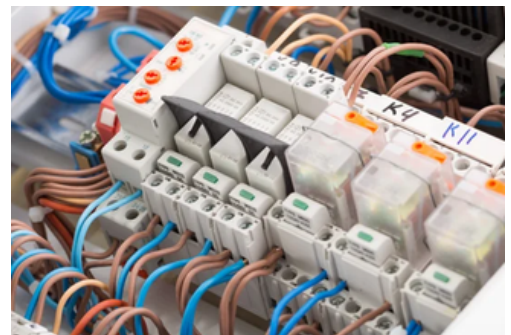
Applications:



Automotive



Commercial



Industrial

- DC-DC converters for power management
- Freewheeling diodes in motor control circuits
- Polarity protection for sensitive electronics
- RF systems for communication and infotainment
- Switched-mode power supplies (SMPS) for efficient power conversion
- LED lighting circuits for enhanced energy savings
- Power supply units for electronic devices
- SMPS for effective energy transformation
- LED circuits for improved power efficiency
- Power units for electronic devices

CONTACT MCC TO REQUEST A SAMPLE

mccsemi.com | +818.701.4933

